



ALPINE MONTESSORI

"The mind is not a vessel to be filled, but a fire to be kindled"
— Plutarch

Notes from 908

DATES TO REMEMBER

2/14

Valentine's Day parties,
all classes

2/21

President's Day,
school closed

We started off the new year at the school early in the month of January and enjoyed some fantastic weather! Though we all wished for a little snow, we were grateful for the open air that the temperature afforded us for many of the days. Lately we are reminded that winter has not forgotten us after all.

This month we will celebrate Valentine's Day on Monday, February 14th, with parties in the classrooms. Parents of the primary class are asked to send 18 cards with their child to school on Monday, February 14th. The school will provide "mailboxes" for each child in this class in which to bring their goodies home. Please read more about the Primary party in the following pages. The elementary class will have their annual Valentine's Day Tea, a delightful gathering of peers where they share tea and treats along with their cards of admiration. Elementary students are asked to make their "mailboxes" (a box, sack, container) at home and bring them to school on the day of the tea. There are currently 24 children in the class. The adolescent program will also have some time toward the end of the day to celebrate the holiday. Please ask your 7th grader for more details.

February is also Grace and Courtesy month at the school! Throughout the next few weeks, each class will enjoy lessons, stories, and crafts that exemplify this, one of the foundations of the Montessori method. Alpine Montessori strives to instill in our students a sense of ownership of their school. In this way, the children care for the environment as they would care for themselves. Grace and Courtesy lessons help guide the children to work together in harmony, respecting one another and respecting the self. You can see this in how the children learn at an early age to greet one another, how to not tread on another's workspace, and how to take turns when communicating. We are looking forward to exploring these concepts in more depth with the students!

Lastly, the school will be closed Monday, February 21st.



From the Elementary



The students in the elementary class are excited to celebrate the upcoming holiday with their annual Valentine's Day Tea, to be held Monday, February 14th. Students who wish to bring cards for their classmates are encouraged to do so! It is a LOVEly gathering that you'll hear much about at day's end.

This month the lower elementary will begin learning the parts of an arachnid. All students will continue their studies in the physical changes of matter and begin lessons on all landforms. In February the teachers also dedicate some lessons to black history in celebration of Black History month. For parents of emerging and struggling readers, your child's nightly

homework of reading with you is starting to really pay off. It is just delightful to witness the shift in a child's world when the pleasure of reading takes hold. Keep up the great work!

As mentioned elsewhere in the newsletter, the school is focusing on Grace and Courtesy lessons this month. The elementary class will consider the subjects of kindness, responsibility, and listening. We often find that when we discuss these virtues as a group, we all see there may be room for improvement, even among the staff. The best lessons are those that are enriching and relatable for everyone!

Please note the school will be closed on Monday, February 21st, for Presidents' Day. Happy February!

The Primary Side

Though this season has been relatively mild in comparison to previous years, we have had some pretty chilly days! This last month of winter is a short one and we are all looking forward to seeing new buds on the trees in the spring. The primary class will enjoy a Valentine's Day party on Monday, February 14th. Please send your child with 18 cards to distribute among their friends. We kindly ask that the cards not be individually addressed, but do sign them!

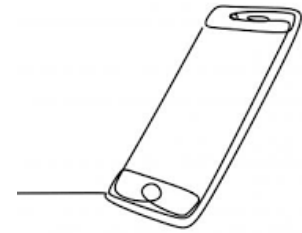
During Grace and Courtesy month at the school the children will have lessons on kindness, table manners, and keeping their environment neat, among other topics.

Kindergarteners are already becoming familiar with the elementary space as they retrieve materials from that class that cross over. Formal visits where they shadow an elementary student will begin in late March. Parents are also welcome to observe the elementary class. Please call for an appointment!



Will the School Close Today??

We've made it this far without a "bad weather day" but February's climate can be very unpredictable. We thought it would be a good time to remind everyone how to determine if it's worth braving the streets to get your child to school if there is snow or ice on the ground. We do our best to follow the lead of AISD when it comes to school closures, late starts, and early dismissals due to inclement weather. However, we have been known to call it a little earlier with early dismissals if we feel the "writing is on the wall." A good rule of thumb is to check your phone for Remind messages from the school, which is our best way to alert everyone quickly. We will also contact the local Alpine and Marfa radio stations with updates, and we will post on Facebook. Finally, in the event of early dismissals, we will also add emailing to the list. Above all, we encourage parents to use their best judgement and don't take the risk if you feel uncomfortable about driving. We are always happy to help a student catch up with any missed instruction. For more information about how to sign up for Remind texts, please contact the school. We are happy to help you get it set up!



Around the AP



At every stage of development, a Montessori curriculum focuses on educating the whole child. While academics are demanding, the curriculum also focuses on social, emotional, spiritual, and physical education. This is no less important in the adolescent student. From the age of 12 through 15, this 3-year cycle is a time of monumental physical and neurological growth. As every parent of a teen can attest, the adolescent begins flexing their autonomous muscle at this age. But they are no strangers to independence; autonomy has been encouraged in the Montessori curriculum since primary. This can be an emotional time for the child, as self-awareness and egocentrism collide with self-criticism.

We proceed gently, and strive to honor this time of creativity, critical-thinking, and courage with lessons and conversations that allow for fair debate and compromise. Indeed, ultimately it is a lesson in patience!

The current learning cycle in the AP is Identity. The students are studying genetics, immigration, poetry, and interpersonal relationships. They are currently working on a poetry anthology. The next cycle will focus on Systems: economic, governmental, and in language. They will also explore "Habit 5": seek first to understand, then be understood... in essence, listen before reacting.

We were saddened to learn that the scheduled trip to France this month was rescheduled to November due to current international travel challenges. In the meantime, the students continue their academic enrichment with weekly study in robotics, wood-working, and art. We are SO proud of these awesome students!

We Thank YOU!

We get by with a LOT of help from our friends. We would like to thank the following people and businesses for their contributions to our school.

Erin and Jeff Williams, for the incredible (and ABUNDANT) donation of tea to the elementary class!

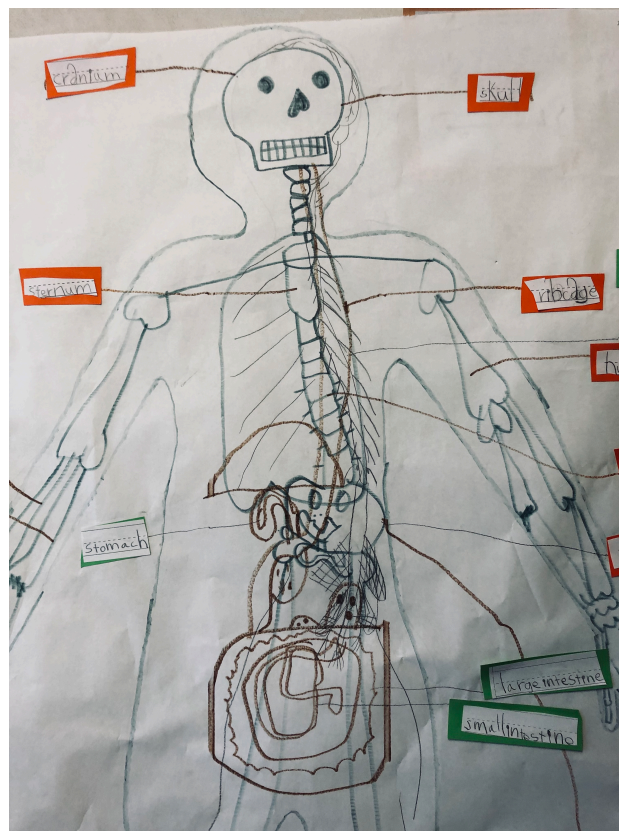
Katie and John Ray, for providing lunch for the primary class in honor of Paul's birthday!

Amber and Justin Smith, for bringing the donuts for the teachers!

Brian Young, for donating dry ice to the elementary classroom, supporting their lessons in physical changes of matter!

Chris Sibley, for the donation of groceries to the adolescent program... now we are all benefiting from homemade baked goods!

Jill Goodwin, for her donation of helpful and very useful lawn care implements for our campus!



Kindergarten students identify parts of the body using their own traced body as a template. >>

Alpine Montessori is a 501(c)(3) organization. Alpine Montessori admits students of any race, color, national and ethnic origin to all rights, privileges, programs and activities generally accorded or made available to students at school. It does not discriminate on the basis of race, color, national and ethnic origin in administration of its educational policies, admissions policies, scholarship and loan programs and athletic and other school-administered programs.